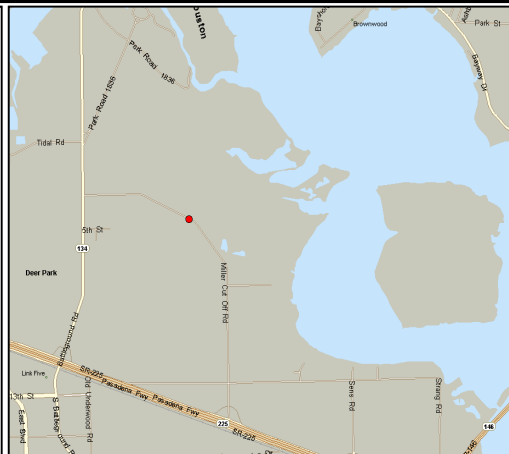


# Battleground Oil Specialty Terminal Company LLC ("BOSTCO")



***Delivering Energy To Improve Lives And Create A Better World***

## Terminal Specifications

- 185 acres located on the Houston Ship Channel
- 57 tanks ranging in size from 30,000 to 320,000 barrels with a total storage capacity of 7,080,000 barrels



## Commodities Handled

- Residual Fuel Oil, LSFO, HSFO, Feedstocks, Crude, Distillates, Blendstocks, Gas Oils, Bunkers, ULSD, Chemicals, and Refinery Grade Propylene

## Access

- Marine service via 14 berths accessible by the Houston Ship Channel
  - Two ship docks (45' MLW) capable of handling up to Suezmax size vessels (1,000' LOA)
  - Twelve barge docks (15' MLW)
- Highway access from East Sam Houston Tollway and State Highways 225 and 146
- Rail access from the Union Pacific
- Pipeline (receiving): ExxonMobil Baytown (ULSD)

## Terminal Services

- 30 Railcar Unloading Spots
- Product Blending and Heating
- Berths Available for Lightering and COC Inspections as well as Lay Berths
- Terminal and Dock Expansion Capacity

## Major Features

- High Speed Pumping Rates of 30k bbl./hr. for Loading Ships
- Dual Stripping Systems to Ensure Product Integrity
- LSFO Segregated Piping Systems
- Pipeline Connection ExxonMobil Baytown Inbound
- Additional Land for Expansion

### Terminal Address

1836 Miller Cut Off Road  
La Porte, TX 77571  
(281) 241-3838



### Business Address

300 Beltway Green Blvd.  
Pasadena, TX 77503  
(832) 463-4797

***Kinder Morgan provides energy transportation and storage services in a safe, efficient and environmentally responsible manner for the benefit of people, communities and businesses***